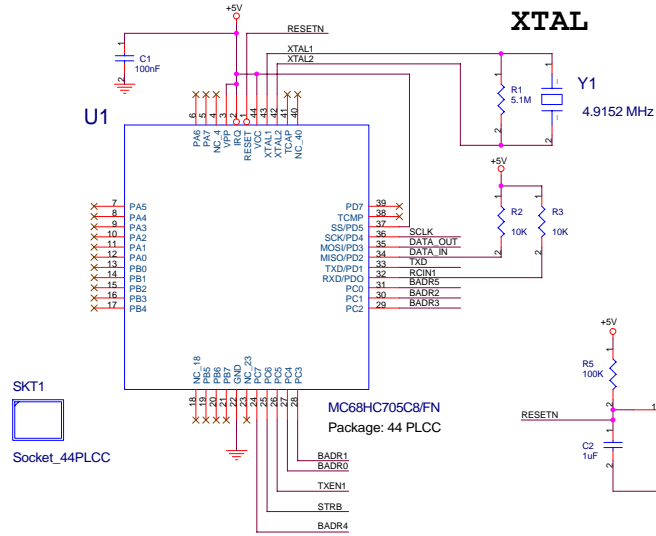
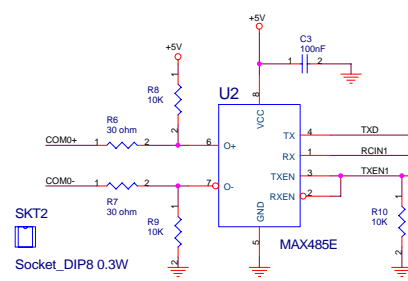


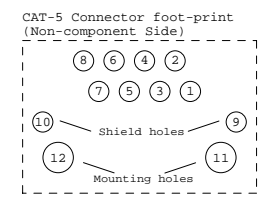
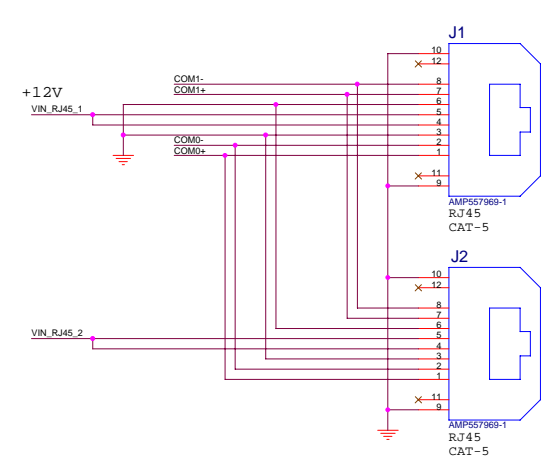
### MICRO



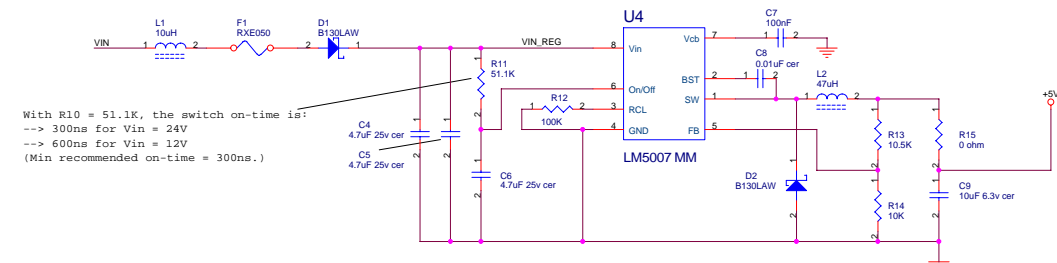
### COM PORT



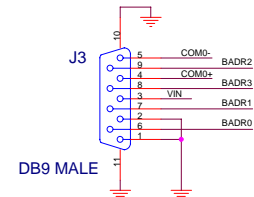
### RJ45 CONNECTORS



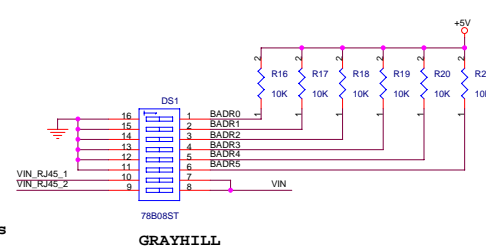
### POWER SUPPLY SECTION



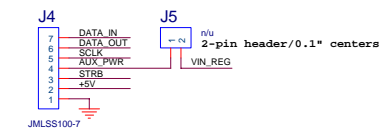
### POWER



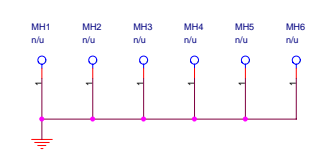
### BOARD ADDRESS



### TO SWITCH BOARD



### MOUNTING HOLES



- Highest REFDES Used:
- 1) R21 (R4 Not Used.)
  - 2) C9
  - 3) D2
  - 4) F1
  - 5) L2
  - 6) U4
  - 7) J5
  - 8) SKT2
  - 9) MH6
  - 10) DS1
  - 11) Y1

Pins 10 & 11 are Mounting Holes (MH2 & MH3).

GRAYHILL

Sierra Automated Systems & Engineering Corp.  
 2625 San Fernando Blvd.  
 Burbank, California 91504

Title	CRS8RJ	
Size	Document Number	Rev
C	CRS8RJ	A
Date:	Monday, December 11, 2006	Sheet 1 of 1