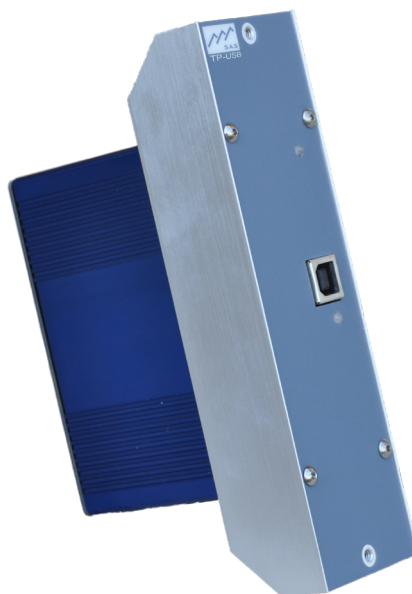


TP-USB

SAS USB AUDIO INTERFACE



The SAS TP-USB is a revolutionary USB audio interface for your studio.

The new SAS USB Turret Panel provides hosts, producers, talent or studio guests an easy way to connect their laptop to the SAS audio network. You will see an immediate improvement in audio quality, bypassing the typical low grade sound cards built into most laptops. This turret module is equally at home in a small guest position turret or as part of a full Rubi-T console.

Rack Mounts too! The TP-USB is also available in a rack mount configuration with up to 4 modules mounting in a 19" wide panel. Connect your studio computer to the rear USB connector on the TP-USB for a clean installation with professional audio quality without the hassle of sound cards, drivers and cable harnesses.

Not just for SAS users.

Essentially, the TP-USB is an external sound card for a Windows or Mac computer. Requiring no drivers, it appears in your sound control panel as an alternative to your built-in audio devices and is immediately usable by any software. Since the audio connections to the TP-USB are just audio, this unit will work for any application that demands excellent audio specifications from your PC.



Awesome Audio. The TP-USB provides bi-directional audio in both AES and balanced audio formats. Our use of an external power supply allows us to produce clean audio with incredible headroom - quality not possible with USB bus powered devices. And our 24 bit digital conversion engine provides clarity and definition way beyond 16 bit models. Designed, built and programmed by SAS engineers, you won't find anything that compares.

1.818.840.6749 voice
1.818.840.6751 fax

2821 Burton Avenue
Burbank, California
91504-3224 USA

www.sasaudio.com

Also available for
OEM applications!

TP-USB Features

Audio Inputs

AES Input, 32 to 192kHz, RJ45 Connector
Balanced Analog Stereo Input, RJ45 Connector
Auto-sensing input looks for digital signal first, if none present, switches to analog input.

Audio Outputs

AES Output 44.1 and 48Khz, RJ45 Connector
Balanced Analog Stereo Output, RJ45 Connector
Both outputs are always active.

USB Features

Front and rear USB type "B" connectors
Plug and Play - no drivers needed
Compatible with USB 1.1 or higher

Compatibility

Windows 2000, XP, Vista, Server 2003/2008
Mac OS X

Specifications

24 Bit Delta Sigma Digital Conversions

Power Requirements

Requires 12VDC, 500mA power.

Dimensions

Turret Mount: 6"h x 1.6"w x 3.5"d
Rack Mount: 1.5"h x 19"w x 3.5"d (holds 4 units)
OEM Package: 1.45"h x 3.875"w x 3.5"d



SIERRA
AUTOMATED
SYSTEMS

TP-USB

It's as easy as
Plug,



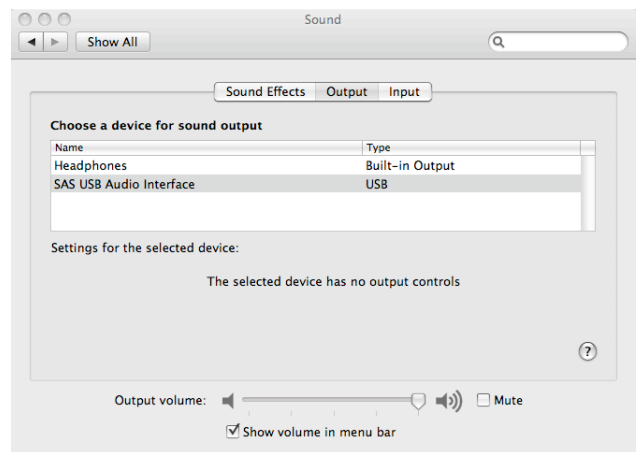
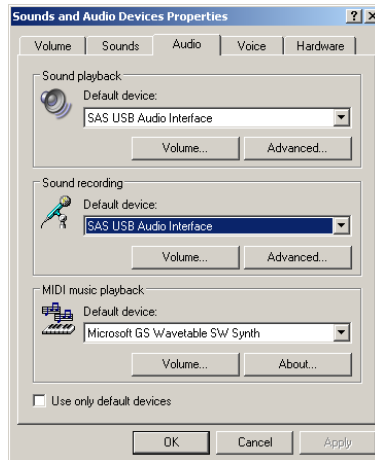
Plug,



Plug



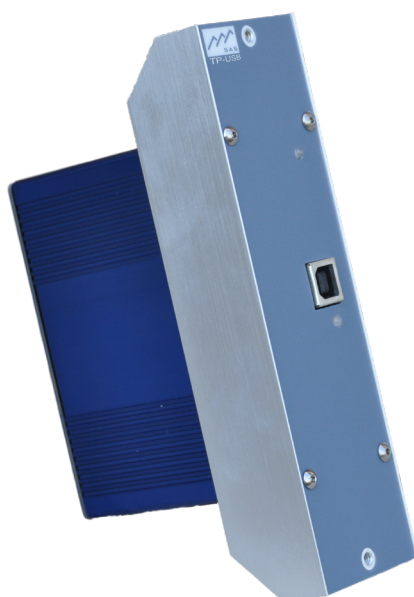
and Play!



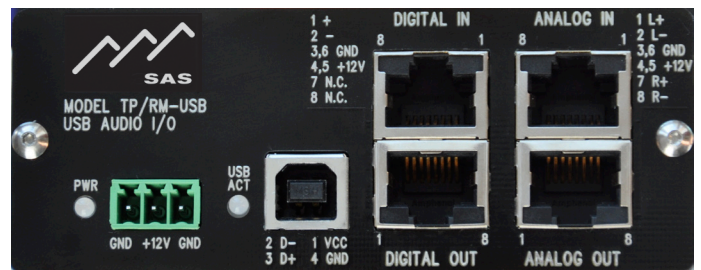
TP-USB Photos



Front (turret version)



Side (turret version)



Rear



**SIERRA
AUTOMATED
SYSTEMS**