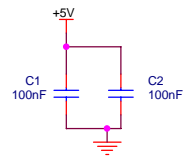


SSW5 is the second position for SW5 on the PCB.

For +12V:
 1) SIP3 & SIP4 = 1K
 2) SIP2 = 22K



Sierra Automated Systems & Engineering Corp. 2625 San Fernando Blvd. Burbank, California 91504		
Title: VTSW8-5V		
Size: B	Document Number: Turret Panel Board	Rev: A
Date: Thursday, October 26, 2006	Sheet: 1 of 1	